

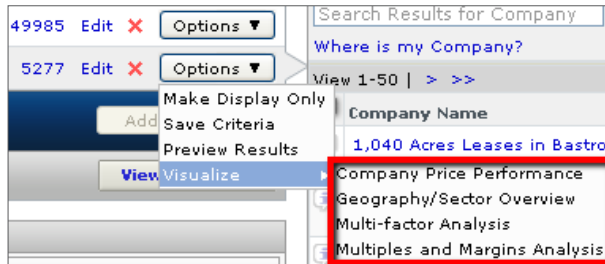
Screening Visualization Tool

S&P Capital IQ's Visualization tool allows for advanced data analysis of Screening Results by quickly displaying visual results of trends, patterns, and outliers.

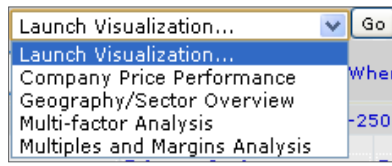
VISUALIZATION TOOL

You can access the Screening Visualization tool four ways:

1. On the Company Screen Builder, click the Options button to the right of your criterion, hover over Visualize, and select a template from the dropdown. *(Note: To view a true aggregate, you must have less than 10,000 results.)*

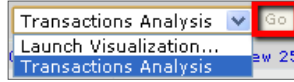


2. On the Company Screening Results page, click the Launch Visualization... dropdown, select a template from the dropdown, and click the Go button.

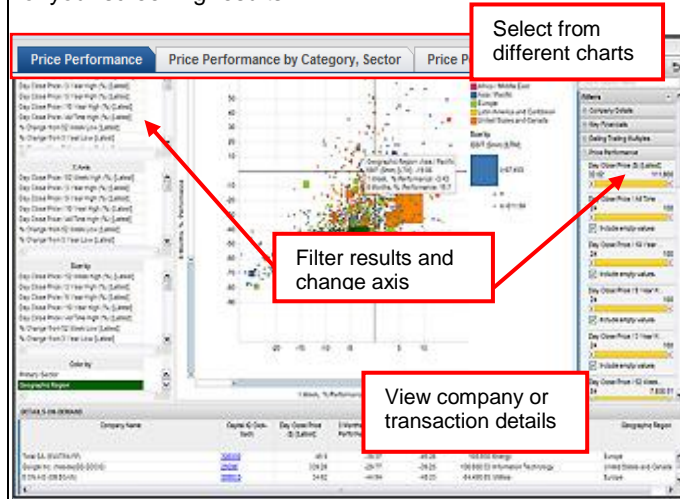


3. On the Transaction Screen Builder, click the Options button to the right of your criterion, hover over Visualize, and select Transactions Analysis.

4. On the Transaction Screening Results page, click the Launch Visualization... dropdown, select Transactions Analysis, and click the Go button.



A new browser window will open with the visual representation of your screening results.

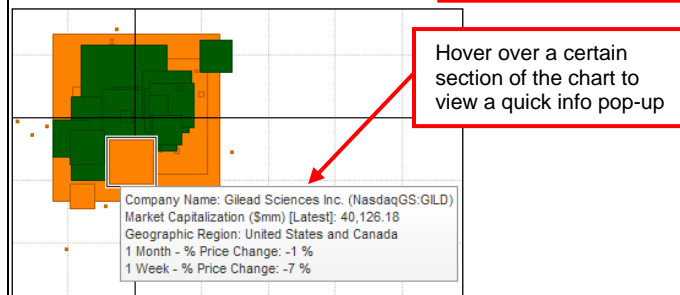


The results are plotted within pre-selected visualizations. Each template is a combination of charts, configuration options, a details section, and filters. You may change the axes on certain visualizations and use the filter panel to further refine results.

DETAILS ON DEMAND

View company or transaction details by clicking on and highlighting an area on the chart. The details will appear in the bottom Details on Demand panel. You can also use the S&P Capital IQ Click-Back column to return to the S&P Capital IQ platform for more in-depth details. For a pop-up that contains quick info, hover over any data point on the chart.

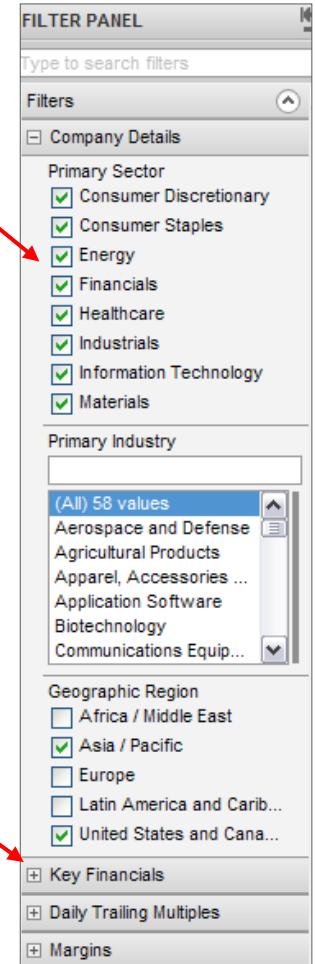
Company Name	S&P Capital IQ Click-Back	Primary Sector
Susser Holdings Corporation (NasdaqGS:SUSS)	26556501	Consumer Staples
AT&T, Inc. (NYSE:T)	100231	
Whole Foods Market, Inc. (NasdaqGS:WFM)	36602	
Capstead Mortgage Corp. (NYSE:CMO)	258673	



FILTERING RESULTS

Use the Filter Panel on the right to further refine your screening results.

Un-check certain boxes to remove a group or metric from the visualization



Click on the plus sign to expand a particular section

You can also refine your results by using the sliding toolbars in certain sections. When you slide one toolbar all others within the category will adjust accordingly. You can also type in a specific value and the toolbar will go to that set value.

The Filter Panel contains several sections with sliding toolbars and checkboxes:

- Company Details**
- Key Financials**
 - Market Capitalization (\$mm): 38,392.14 / 143,329.35
 - Gross Profit (\$mm) [LTM]: -17.26 / 68,130.00
 - Total Revenue (\$mm) [LTM]: -1.36 / 185,144.00
 - Total Enterprise Value (\$m...): -796.82 / 730,797.35
 - EBITDA (\$mm) [LTM]: -378.56 / 39,512.00
 - Net Income (\$mm) [LTM]: -2,011.00 / 20,384.00
 - Diluted EPS Excl. Extra It...: -19.73 / 14.24

Each section has a sliding toolbar and a checkbox for "Include empty values".

Click and drag on the

Double click on the label to type in a set value

Select this box if you would like to include empty values

To quickly search for a filter, use the Search function at the top of the Filter Panel.

Reset your filters by clicking on the arrow at the top of the Filter Panel.

CHANGING AXES

Each axis represents a numerical range and data are plotted according to where they fall. Change the X-axis and Y-axis by selecting metrics on the left panel under Set Axis.

Each point on the chart can have a size as well. The size is determined by the selected metric in the Size by section.

The chart configuration panels include:

- Size by:** Key Financials
 - Market Capitalization (\$mm) [Latest]
 - Total Revenue (\$mm) [LTM]
 - Gross Profit (\$mm) [LTM]
 - EBITDA (\$mm) [LTM]
 - Net Income (\$mm) [LTM]
- Divide by:**
 - Geographic Region
 - Primary Industry
 - Primary Sector
- Set Axis:**
 - Price Performance - X Axis
 - 1 Month - % Price Change
 - 1 Week - % Price Change
 - 1 Year - % Price Change
 - 3 Month - % Price Change
 - 3 Year - % Price Change
 - 6 Month - % Price Change
 - 9 Month - % Price Change
 - Price Performance - Y Axis
 - 1 Week - % Price Change
 - 1 Month - % Price Change
 - 3 Month - % Price Change
 - 6 Month - % Price Change
 - 9 Month - % Price Change
 - 1 Year - % Price Change
 - 3 Year - % Price Change

Select a Size by metric

Adjust your axis by selecting different metrics

EXPORTING RESULTS

EXPORT VISUALIZATION IMAGE

You can export your results as an image by clicking on the button at the top right corner of your visualization and selecting Export Visualization Image.

A new browser window will open with the exported image for you to save. Right-click on the mouse to save, copy, email, or print the image.

You can export the image with or without a legend. Click on the button at the top right corner of your visualization to show/hide the legend prior to exporting.

EXPORT TABLE RESULTS

After highlighting specific areas on the charts in your visualization, you can export your results to Excel by going to the Export Results tab at the top of the page. Here you will find a table based on what you highlighted in the visualizations. This is similar to the Details on Demand table.

Once you are on the Export Results tab, click on the button at the top right of the table. Select Export Table or Export Table (without value formatting) to export the table to Excel.

The Export Results tab shows a table with the following columns: Company Name, Excel Company ID, Geographic Region, Primary Sector, and Primary Industry.

Company Name	Excel Company ID	Geographic Region	Primary Sector	Primary Industry
Advanced Medical Optics Inc. (NYSE:EYE)	02433584	United States and	Healthcare	Healthcare Equip.
AHH Healthcare Services Inc. (NYSE:AHJ)	024821	United States and	Healthcare	Healthcare Serv.
BioSero Inc. (NASDAQ:BIOS)	0220169	United States and	Healthcare	Healthcare Serv.
Charles River Laboratories International Inc. (NYSE:0291093)	0291093	United States and	Healthcare	Life Sciences Top
CGMA Corp. (NYSE:CI)	0172899	United States and	Healthcare	Managed Healthc.
Community Health Systems, Inc. (NYSE:CVH)	026782	United States and	Healthcare	Healthcare Facilities
Coventry Health Care Inc. (NYSE:CVH)	0227133	United States and	Healthcare	Managed Healthc.

The analyses, including ratings, of Standard & Poor's and its affiliates are statements of opinion as of the date they are expressed and not statements of fact or recommendations to purchase, hold, or sell any securities or make any investment decisions. Users of ratings or other analyses should not rely on them in making any investment decision. Standard & Poor's opinions and analyses do not address the suitability of any security. Standard & Poor's does not act as a fiduciary or an investment advisor except where registered as such. Copyright © 2011 by Standard & Poor's Financial Services LLC (S&P), a subsidiary of The McGraw-Hill Companies, Inc. All rights reserved. STANDARD & POOR'S, S&P, GLOBAL CREDIT PORTAL, are registered trademarks of Standard & Poor's Financial Services LLC. Capital IQ is a registered trademark of Capital IQ, Inc.